

The Campaign for Colburn
Newsletter Fall 2024

BUILD ING

OUR FUTURE

FALL 2024

President's Update

CAMPAIGN COMMITTEE

Henry Choi, *Co-chair*
Diane Naegele, *Co-chair*
Carol F. Henry
Harry B. Suh



Dear Friends,

I write to you as summer draws to a close and a new school year begins. There is always a wonderful crescendo in energy when our students return to campus and fill the halls with music, dance, and conversation.

At the time of our last newsletter, we had just received our grading permit and were preparing for groundbreaking. The progress we have witnessed at the construction site in the months since has been remarkable. Foundations are in place that ensure the building's structural integrity and we are beginning to implement utility-related infrastructure. This includes the layout, excavation, and installation of underground mechanical, electrical, and plumbing systems. Recently, work began on chilled water lines that will effectively and efficiently cool the building.

With construction across the street in full swing, I invite you to envision the completed building and the transformative arts education and performances that will take place inside. This edition of our newsletter highlights some of the funds that will directly support programming in the Colburn Center and elevate the experiences of students, faculty, and audiences.

The donors who have created these funds join dozens of other leadership supporters who have made commitments through endowments, seat-naming, space dedications, and Founders Circle memberships, now totaling \$323M. We are grateful to our extraordinary donors whose capital and endowment gifts are amplifying the School's primary tenet of access to excellence.

Thank you for continued interest in performing arts education. I hope to see you on campus soon.

All the best,

A handwritten signature in black ink, appearing to read 'Sel Kardan'. The signature is fluid and cursive, written over a white background.

Sel Kardan
President and Chief Executive Officer

To learn more about being a part of Colburn School's transformation, please contact Annie Wickert, Senior Vice President of Philanthropy and Director of Capital Campaign, at awickert@colburnschool.edu or call **310-569-0690**.

CAMPAIGN PROGRESS TO DATE

\$400M GOAL

\$323M GIFTS AND PLEDGES

A Look Inside

Elegant in design and all-encompassing in function, the new Colburn Center reflects conversations between the School and our community. As part of the Building Our Future campaign, we are raising funds for the building and the programs inside.

These pages spotlight three funds that support and celebrate our core activities and inspire and train the next generation of performing artists: the Fiock Family Fund for Excellence; David Kobrin Fund for Dance Excellence; and the Community School Ensemble Fund.

Leadership donors have seeded these funds and we invite anyone who feels these funds align with their values to make gifts of any size.

Any gifts over \$100,000 to the Building Our Future Campaign are recognized with your name on the wall inside the Terri and Jerry Kohl Hall and membership in the Founders Circle.

FIOCK FAMILY FUND FOR EXCELLENCE

In the words of Jascha Heifetz Distinguished Violin Chair Robert Lipsett, "Walls don't make a school." Our students, families, donors, staff, and faculty do.

Colburn community member Richard E. Fiock instinctively recognized this principle; specifically, the faculty's vital role in mentoring and championing our students. We are well regarded for attracting and retaining faculty who stay at the School for decades, guiding students from early childhood through to professional careers as educators, performing artists, and global citizens.

In support of the School and Los Angeles' ability to enjoy the benefit of world-class arts educators in perpetuity, Rich made a commitment of \$6M to establish the Fiock Family Fund for Excellence, an endowment that will ensure the School's ability to attract and retain outstanding artist faculty, who are helping shape the artistic landscape of Los Angeles.



"It is so wonderful to be involved in the Colburn community at this thrilling time! As Professor of Horn at the Colburn Conservatory and Principal Horn of the LA Phil, I have the joy of not only teaching our amazing students, but also the opportunity to perform with them and other Colburn faculty in chamber concerts, at festivals, and in the Colburn Orchestra. In Frank Gehry's wonderful creation, the new Terri and Jerry Kohl Hall will provide a world-class environment to work with the students on the same stage dimensions as the LA Phil plays. This will provide the students with a real connection to the professional world and give Los Angeles another much needed venue for the incredible performers of this city. I look forward to performing with my colleagues, students, and former students side by side in the new hall and I'm excited to see the positive effects for our community."

—Andrew Bain

Principal Horn of the Los Angeles Philharmonic Orchestra and faculty for Colburn's Conservatory of Music, Community School of Performing Arts, and Music Academy



DAVID KOBRIN FUND FOR DANCE EXCELLENCE

The David Kobrin Fund for Dance Excellence was established through a \$2M commitment in anticipation of the opening of the Colburn Center. Inspired by his parents, Beverly and Donald Kobrin, David created the fund to help ensure that dancers have access to the most inspiring and confidence-building learning and performance spaces in the world.

The new dance school, characterized by high ceilings and clean lines, will be wrapped in a glass façade, inviting the community to view the learning happening inside. The space brings five spacious dance studios, one of which transforms into an intimate 100-seat performance space, as well as dean's offices, dressing rooms, and a learning library and gathering space for guest artists. These professional-level spaces will elevate the dancers' experience in the Trudi Zipper Dance Institute, preparing them for the professional dance world.



“As dance continues to grow in Los Angeles, the Colburn Center will be a place to welcome and support that growth. This new home will provide space for new programs for our students and bring opportunities that go beyond their classroom work and studies, including experiences and collaborations with visiting and local professional artists. The Colburn Center will continue to serve our community with excellence in training but will also become a space where Los Angeles can come to see the great artists of our city, and beyond, create and perform.”

**– Janie Taylor,
2024-25 Artistic Director, Trudi Zipper
Dance Institute**



COMMUNITY SCHOOL YOUTH ENSEMBLE FUND

Colburn students train diligently with the goal of performing in large ensembles throughout the year. But since no current stages on campus can support large ensembles, these appearances take place in theaters scattered across the city. This results in costly rental fees, inconsistent performance experiences, and a diminished ability to build an audience community.

In February 2024, the Ward family, who are longtime members of the Colburn community, made a meaningful \$500,000 gift to launch the Community School Youth Ensemble Fund, which will support the performance activities of large ensembles in the Community School. These ensembles—Youth Orchestra, Chamber Orchestra, Sinfonietta, Concert Band, String Ensemble and Orchestra, Youth Chorus, and Concert Choir, to name just a few!—present dozens of performances each year and will present even more performances, which will have significant production costs in the new building. Thus, contributions to the Community School Youth Ensemble Fund pay for those costs, making it possible for these young musicians to experience what it's like to perform in extraordinary spaces like the Terri and Jerry Kohl Hall—it promises to be a life-changing experience for them!



“Our Colburn Band and Orchestra large ensembles provide students with opportunities to develop advanced musicianship and leadership skills within a rigorous musical environment. As the LA music scene evolves, we strive to prepare our students to become successful professional musicians who understand the importance of music patronage and how to perform various genres. Our detail-oriented rehearsals encourage collaboration amongst the sections and broader ensembles, and selected repertoire reflects our diverse community and the SoCal diaspora alongside traditional works. Students from across Southern California gather weekly to create unique musical performances and participate in an experience where every student is essential, valued, and crucial to the success of the performances.”

**—Eleanor Núñez
Director of Bands, Orchestras, and Conducting**



NAME YOUR SEAT!

Donors of all levels can participate in the campaign by naming a seat in commemoration of yourself, faculty, family, or friends. Dedicate seats in all four Colburn venues—Zipper Hall and Thayer Hall, plus the two future venues of Terri and Jerry Kohl Hall as well as the Dance Studio Theater.

For information about seat naming, and to view current seat maps and availability, visit colburncenter.org/seat.



[Learn More](#)



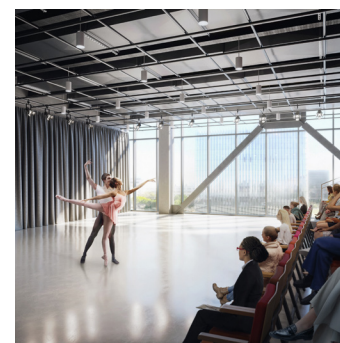
ZIPPER HALL



THAYER HALL



TERRI AND JERRY KOHL HALL



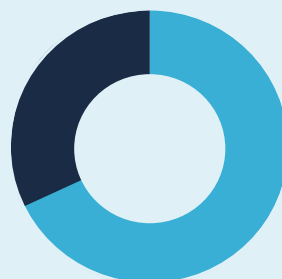
DANCE STUDIO THEATRE

THE COLBURN EXPERIENCE

Located in the cultural corridor of Downtown Los Angeles, the Colburn School provides the highest quality music and dance education to 2,000 students in a typical year. Robust scholarship support for students levels the playing field in arts education. The School's founding principle of "access to excellence" provides a performance-centered education with unparalleled faculty and facilities for all stages of development. This commitment is also evidenced by Colburn's rich history of providing audience access to excellent musical and dance performances, 85% of which are free and open to the 30,000+ audience members yearly.

For information about our upcoming events and performances, both free and ticketed, visit our season calendar:

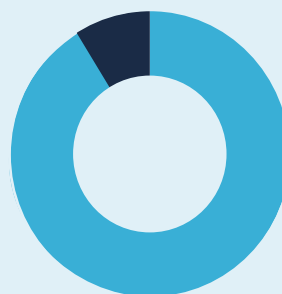
colburnschool.edu/calendar



ANNUAL ARTIST ACCESS

350
Performances by Colburn students & faculty

180
Performances by guest artists



ANNUAL AUDIENCE ACCESS

315
Free performances

35
Paid performances



200 South Grand Avenue
Los Angeles, California 90012
colburnschool.edu