

The Campaign for Colburn
Newsletter Fall 2023

BUILD ING

OUR FUTURE

FALL 2023

President's Update

CAMPAIGN COMMITTEE

Henry Choi,
Co-chair
Diane Naegele,
Co-chair
Carol F. Henry
Harry B. Suh



Dear Friends,

It is my pleasure to share with you the second Building Our Future campaign newsletter. We are excited to provide updates on our progress toward construction of our concert hall and dance center as well as significant developments in our capital campaign.

This issue provides particular focus on the exterior open spaces of the project—the public and private urban gardens that will grace the Colburn Center. Internationally renowned landscape architects OLIN have collaborated with Gehry Partners to create green spaces for study, performance, contemplation, and celebration. Parking lots that have dominated the landscape for more than six decades will be transformed into inviting and inspiring spaces filled with activity.

I am pleased and grateful to be able to share that through your generosity and vision, we have now raised more than \$300M towards our campaign goal of \$400M. Two recent significant philanthropic gifts are dedicated to the gardens and green spaces highlighted in this newsletter. Thank you to all who have joined us in building one of the most important new performance and education centers in the world.

In addition to our progress towards our campaign goal, we continue to move forward with preparations for construction. We have now received critical approvals from the city, and in conjunction with our general contractors, McCarthy Construction, I look forward to sharing a groundbreaking date with you in the coming months.

Until then, thank you for your continued enthusiasm and interest.

A handwritten signature in black ink, appearing to read 'Sel Kardan'. The signature is fluid and cursive.

Sel Kardan
President and Chief Executive Officer

To learn more about being a part of the Colburn School's transformation, please contact Annie Wickert, Senior Vice President of Philanthropy and Director of Capital Campaign, at awickert@colburnschool.edu or call **310-569-0690**.

**CAMPAIGN
PROGRESS
TO DATE**

**\$400M
GOAL**

**\$300M
GIFTS AND
PLEDGES**

CREATIVE UPDATE

Plants as Performers

Renowned landscape design firm, OLIN, best known locally for the Getty Center gardens in Los Angeles, has created design plans for our Mullin Family Garden of Thoughts and Dreams on the rooftop of the dance school and our Choi Family Garden at Hill and 2nd Streets. Human performers and audience will inhabit these spaces, and flora will also play a key role in the experience. Starring water-wise trees and flowering and non-flowering plants of all shapes and sizes, the Colburn Center's natural surroundings will evolve throughout the seasons. The design calls for planting of mature trees and established plants, so garden guests can expect a lush symphony of foliage from day one.



Rendering of the 7,000 square foot Mullin Family Garden of Thoughts and Dreams, on the rooftop of the Dance School, accessible from Terri and Jerry Kohl Hall.

DID YOU KNOW?



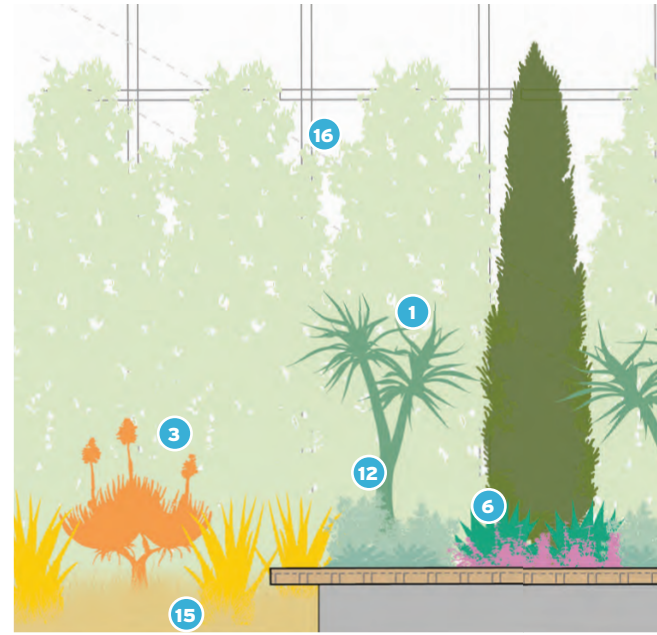
The Colburn Center's green spaces meet and exceed municipal and ecological codes and best practices such as:

- Surpass by nearly 50% the Bunker Hill public pedestrian plaza requirements with over 7,000 square feet of public performance-ready space where students of all ages, faculty, parents, visitors, and community members may gather, rehearse, converse, and relax as well as enjoy small performances. While there are other public gardens on private land in downtown Los Angeles, few are as accessible or as active.
- Harness a robust underground storm water retention system that will allow storm water to be filtered and reused as irrigation in the landscaping of the over 7,000 square feet in the Choi Family Garden and adjacent sidewalk landscaping, as well as the 7,000 square foot Mullin Family Garden of Thoughts and Dreams.
- Contribute dozens of oxygen-emitting and carbon-neutralizing mature trees and plantings that will increase the area of the Los Angeles Urban Forest. The landscape architect, OLIN, has specified a unique variety of drought resistant plants and trees. And, the design calls for mature trees so that shade and the sense of place will be created on day one. The orientation of the garden in relation to daily shading will be a unique and attractive gathering place for the neighborhood.

PERSONAL PERSPECTIVE

Philanthropists in Bloom

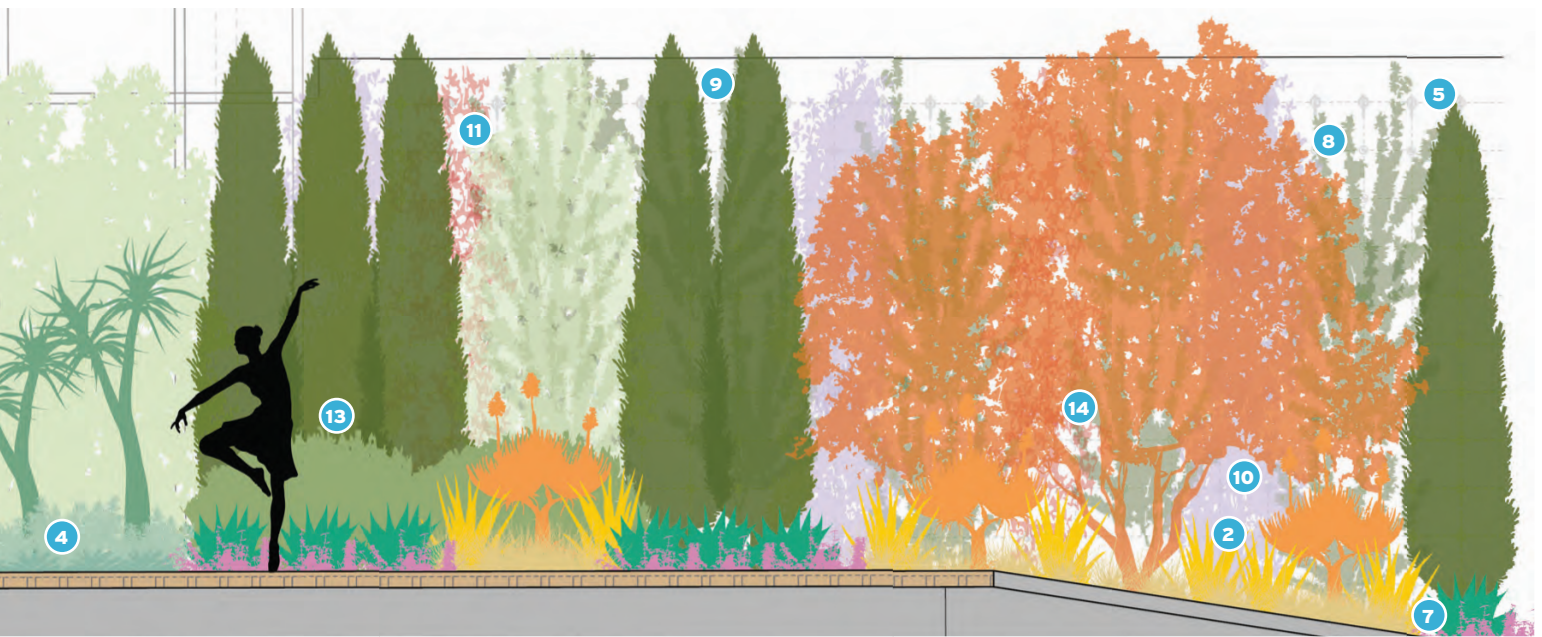
As a testament to the importance of green spaces in downtown Los Angeles, the Colburn School has received early and critical philanthropic support for two prominent gardens in our project. An inspiring commitment from board member Henry Choi and his family has celebrated a vibrant and welcoming Hill Street entrance to our future dance facilities, and, in another perfect pairing, Colburn is honored to name our glorious 7,000 square foot rooftop garden the Mullin Family Garden of Thoughts and Dreams, in honor of Peter and Merle Mullin's transformative commitment to the project. The Colburn School is thrilled that our entry and rooftop gardens will hold their names and continue their traditions of promoting wellness through their giving.



“It is our family’s hope that this garden serves not only as a sanctuary within the city, but also as an intimate invitation into the life of an artist. A bridge between the School and our community, the garden will allow visitors a look through the campus’s glass walls to see hard work, dedication, and excellence on full display everyday.”

**–Henry Choi
Philanthropist, classical violinist,
and Colburn Trustee**





29'3" Stage

PLANT PALETTE

- 1 *Aloe barberae*
Tree aloe
- 2 *Aloe barbadensis*
Aloe vera
- 3 *Aloe plicatilis (Kumara plicatilis)*
Fan Aloe
- 4 *Senecio talinoides ssp. mandralisca*
Blue finger
- 5 *Cupressus sempervirens*
Italian Cypress
- 6 *Agave attenuata*
Foxtail agave
- 7 *Erigeron karvinskianus*
Santa Barbara Daisy
- 8 *Trachelospermum asiaticum*
Asiatic Star Jasmine
- 9 *Vitis girdiana*
Desert grape
- 10 *Thunbergia gregorii*
Orange Clock Vine
- 11 *Distictis buccinatoria*
Scarlet Trumpet Vine
- 12 *Senecio fi coides 'Skyscraper'*
Skyscraper Senecio
- 13 *Arctostaphylos 'Sunset'*
Manzanita
- 14 *Arbutus 'Marina'*
Marina Strawberry Tree
- 15 *Bouteloua gracilis 'Blonde Ambition'*
Blue Grama Grass
- 16 *Pittosporum tenuifolium 'Silver Sheen'*
Silver Sheen Kohuhu

OLIN's Choi Family Garden planting scheme (top), rendering (bottom left), and selection of possible plantings (bottom right), which include Asiatic Star Jasmine, Coast Rosemary, Marina Strawberry Tree, Island Alum Root, and Desert Museum Palo Verde.



CELEBRATING GRAND AVENUE

On October 21, local arts and culture organizations joined forces for a festival along the creative axis of downtown Los Angeles. Grand Avenue Arts: All Access (GAAAA) was a day of family-friendly fun to increase access and information about our cultural corridor. The Colburn School participated again this year celebrating alongside the LA Philharmonic whose season focuses on Frank Gehry and the 20th anniversary of the Walt Disney Concert Hall. We enjoyed sharing more information about the *Building Our Future* campaign at GAAAA and seeing so many new and familiar faces.



THE COLBURN EXPERIENCE

Located in the cultural corridor of downtown Los Angeles, the Colburn School provides the highest quality music and dance education to 2,000 students in a typical year. The School's founding principle of "access to excellence" provides a performance-centered education with unparalleled faculty and facilities for all stages of development. Robust scholarship support for students levels the playing field in arts education.



For information on our programs, student and faculty accomplishments, and most recent happenings, visit our 2022-23 year in review:

colburnschool.edu/the-colburn-effect



200 South Grand Avenue
Los Angeles, California 90012
colburnschool.edu